

◆ SPECIFICATIONS

- Current rating: 3A AC, DC
- Voltage rating: 250V AC, DC
- Temperature range: -25°C ~ +85°C
- Insulation resistance: 1000MΩ Min.
- Withstanding voltage: 1500V AC/ minute.
- Contact resistance: 20mΩ Max.

Material: PPO UL 94V-0
 Circuits: 1~25
 Suitable KR2542 series terminal
 Mates with KR2542 series pin header

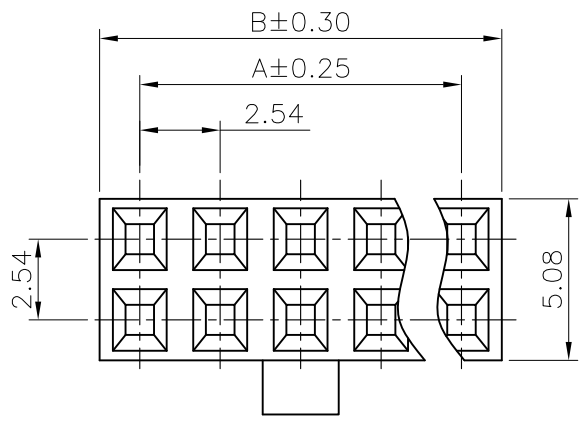
$A = 2.54 \times (\text{CIRCUITS} - 1)$
 $B = A + 2.54$

A2542T***10PO0

CIRCUITS:
 001=1P
 025=25P

			GENERAL TOLERANCE		UNIT: mm		DATE		TITLE:		
			.X ± 0.30 X° ± 1°		DRAWN: 朱佑武		2012.10.18		杜邦2.54 单排 Housing		
			.XX ± 0.20 .X° ±		CHECKED:				PROJECTION PART NO. A2542T0**10PO0		
			.XXX ± 0.10 .XX° ±		APPROVED:				DRAWING NO. 2542H101-1-S		
LTR	NAME	DATE	VERISION RECORD								
1	2	3	4	5	6	7	8	9			

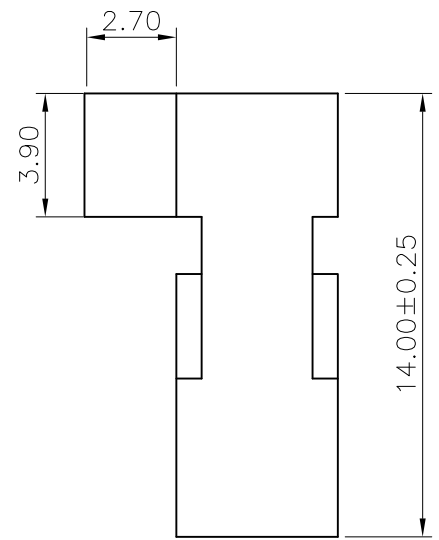
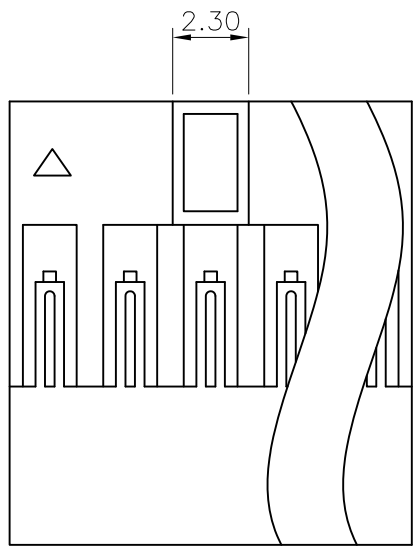




$A = 2.54 \times (\text{CIRCUITS} - 1)$
 $B = A + 2.54$

- ◆ SPECIFICATIONS
- Current rating: 3A AC, DC
 - Voltage rating: 250V AC, DC
 - Temperature range: -25°C ~ +85°C
 - Insulation resistance: 1000MΩ Min.
 - Withstanding voltage: 1500V AC/ minute.
 - Contact resistance: 20mΩ Max.

Material: PPO UL 94V-0
 Circuits: 2x2~2x25
 Suitable KR2542 series terminal
 Mates with KR2542 series pin header



A2542T***10PO4

CIRCUITS:
 202=4P
 225=50P

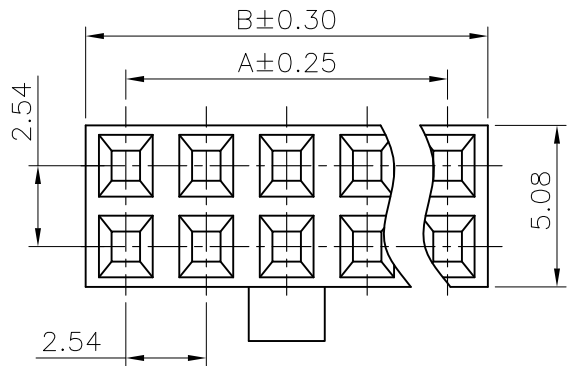
△				
△				
△				
△				
LTR	NAME	DATE	VERISION RECORD	

GENERAL TOLERANCE		UNIT: mm		DATE	
.X±0.30	X°±1°	DRAWN:	朱佑武	2012.10.18	
.XX±0.20	.X°±	CHECKED:			
.XXX±0.10	.XX°±	APPROVED:			

TITLE:		
杜邦2.54 双排高凸 Housing		
VER.	SCALE:	N/A
A	SHEET:	1/1

东莞市康瑞电子有限公司
 DongGuan A Rui Electronic Co., LTD.

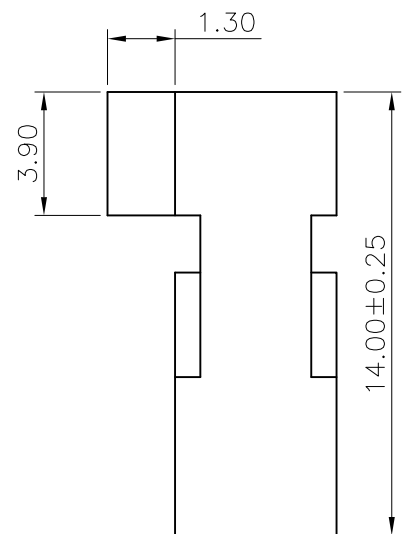
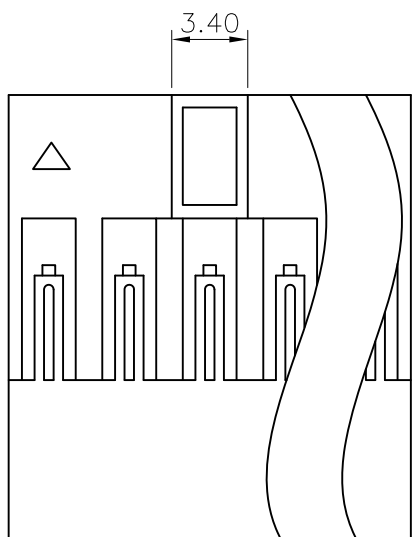
PROJECTION	PART NO.	A2542T2**10PO4
DRAWING NO.		2542H201-1-S






$A = 2.54 \times (\text{CIRCUITS} - 1)$
 $B = A + 2.54$

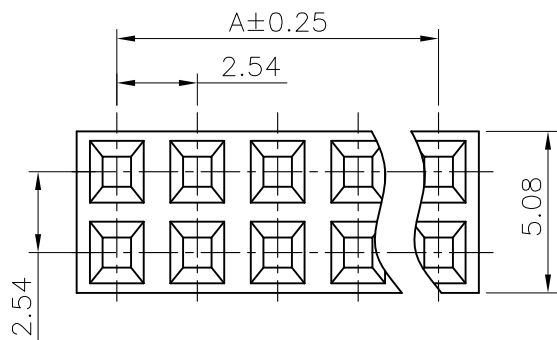
- ◆ SPECIFICATIONS
- Current rating: 3A AC, DC
 - Voltage rating: 250V AC, DC
 - Temperature range: -25°C ~ +85°C
 - Insulation resistance: 1000MΩ Min.
 - Withstanding voltage: 1500V AC/ minute.
 - Contact resistance: 20mΩ Max.

Material: PPO UL 94V-0
 Circuits: 2x2~2x25
 Suitable KR2542 series terminal
 Mates with KR2542 series pin header



A2542T***10PO5
 CIRCUITS: 
 202=4P
 225=50P

<table border="1"> <tr> <td></td> <td></td> <td></td> <td></td> </tr> <tr> <td></td> <td></td> <td></td> <td></td> </tr> <tr> <td></td> <td></td> <td></td> <td></td> </tr> <tr> <td></td> <td></td> <td></td> <td></td> </tr> </table>																				GENERAL TOLERANCE .X±0.30 X°±1°		UNIT: mm DRAWN: 朱佑武 2012.10.18		DATE TITLE: 杜邦2.54 双排低凸 Housing			 东莞市康瑞电子有限公司 DongGuan A Rui Electronic Co., LTD.		
VERISION RECORD .XX±0.20 .X°±				CHECKED:		VER. SCALE: N/A A SHEET: 1/1			PROJECTION PART NO. A2542T2**10PO5		DRAWING NO. 2542H202-1-S																		
.XXX±0.10 .XX°± APPROVED:				APPROVED:																									
LTR	NAME	DATE	VERISION RECORD																										
1	2	3	4	5	6	7	8	9																					



$$A = 2.54 \times (\text{CIRCUITS} - 1)$$

$$B = A + 2.54$$

◆ SPECIFICATIONS

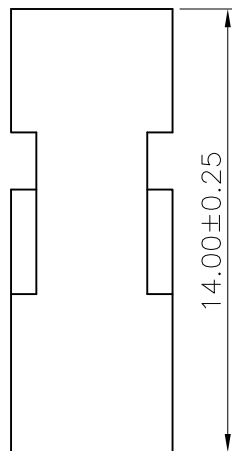
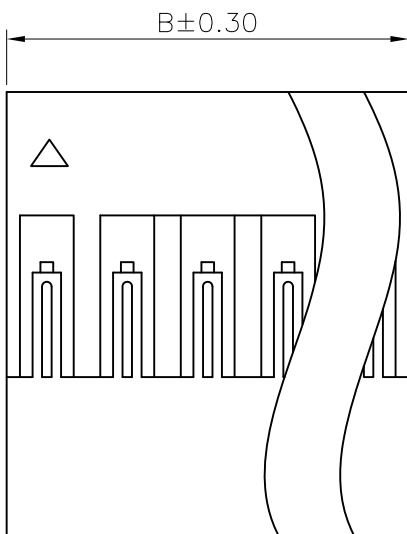
- Current rating: 3A AC, DC
- Voltage rating: 250V AC, DC
- Temperature range: -25°C ~ +85°C
- Insulation resistance: 1000MΩ Min.
- Withstanding voltage: 1500V AC/ minute.
- Contact resistance: 20mΩ Max.

Material: PPO UL 94V-0

Circuits: 2x2~2x25

Suitable KR2542 series terminal

Mates with KR2542 series pin header



A2542T***10PO0

CIRCUITS:

202=4P

225=50P

△				GENERAL TOLERANCE		UNIT: mm		DATE		TITLE: 杜邦2.54 双排 Housing VER. SCALE: N/A A SHEET: 1/1		
△				.X±0.30	X°±1°	DRAWN:	朱佑武	2012.10.18				
△				.XX±0.20	.X°±	CHECKED:						
△				.XXX±0.10	.XX°±	APPROVED:						
LTR	NAME	DATE	VERISION RECORD							PROJECTION PART NO. A2542T2**10PO0 DRAWING NO. 2542H203-1-S		



东莞市康瑞电子有限公司
DongGuan A Rui Electronic Co., LTD.

PROJECTION PART NO. A2542T2**10PO0

DRAWING NO. 2542H203-1-S

A

B

C

D

E

F

A

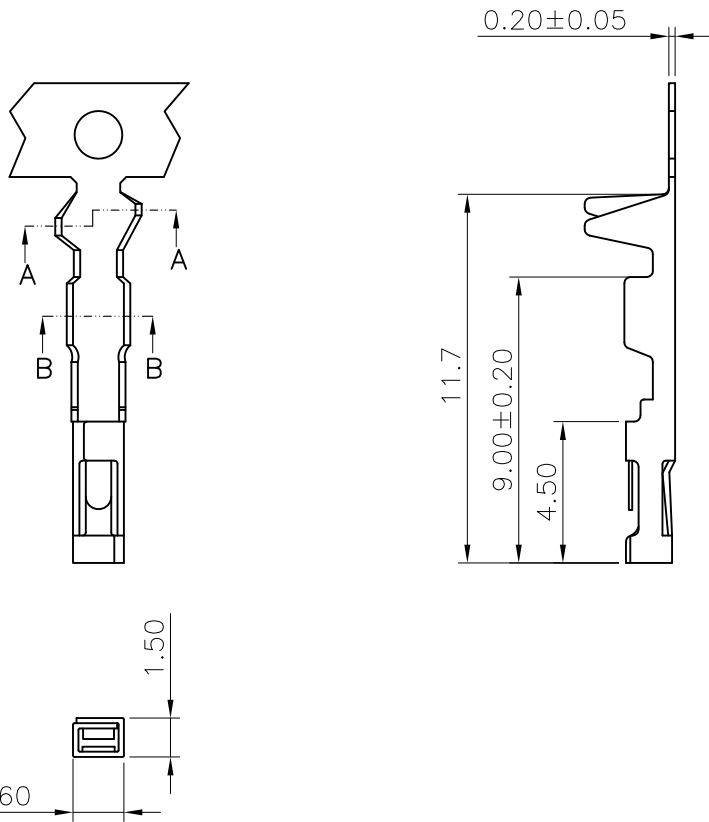
B

C

D

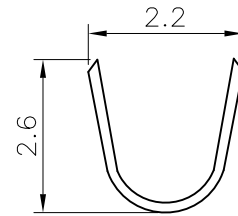
E

F

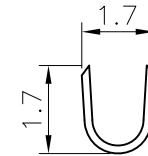


◆ SPECIFICATIONS

- Current rating: 3A AC, DC
- Voltage rating: 250V AC, DC
- Temperature range: -25°C ~ +85°C
- Insulation resistance: 1000MΩ Min.
- Withstanding voltage: 1500V AC/ minute.
- Contact resistance: 20mΩ Max.



A-A SECTION



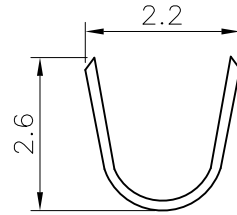
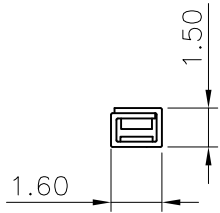
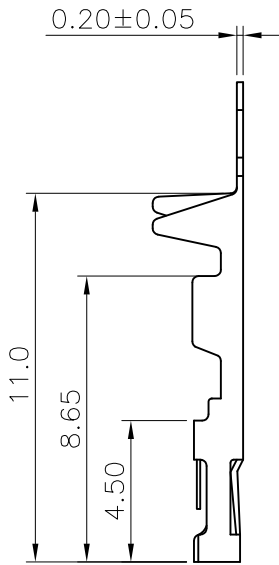
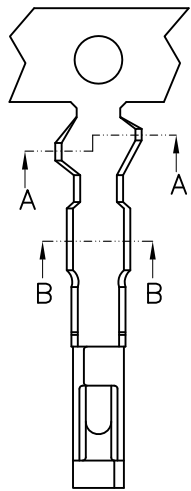
B-B SECTION

PART NO.	WIRE RANGE	INSULATION O.D.	MATERIAL	FINISH	Q'TY/reel
B2542MT1AB20A	AWG#22-#28	1.7mm(MAX)	BRASS	TIN-PLATED	10,000pcs
B2542MB1AB20A	AWG#22-#28	1.7mm(MAX)	BRASS	GOLD-PLATED	10,000pcs

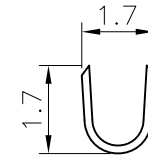
△				GENERAL TOLERANCE	UNIT: mm	DATE	TITLE:		
△				.X±0.30	X°±1°	DRAWN: 朱佑武	杜邦 2.54 母Terminal		
△				.XX±0.20	.X°±	CHECKED:	长体		
△				.XXX±0.10	.XX°±	APPROVED:	VER.	SCALE:	N/A
LTR	NAME	DATE	VERSION RECORD				A	SHEET:	1/1


东莞市康瑞电子有限公司
 DongGuan A Rui Electronic Co., LTD.

PROJECTION	PART NO.	B2542M*1AB20A
DRAWING NO.		2542T01-1-S



A-A SECTION



B-B SECTION

◆ SPECIFICATIONS

- Current rating: 3A AC, DC
- Voltage rating: 250V AC, DC
- Temperature range: -25°C ~ +85°C
- Insulation resistance: 1000MΩ Min.
- Withstanding voltage: 1500V AC/ minute.
- Contact resistance: 20mΩ Max.

PART NO.	WIRE RANGE	INSULATION O.D.	MATERIAL	FINISH	Q'TY/reel
B2542MT1AB20B	AWG#22-#28	1.7mm(MAX)	BRASS	TIN-PLATED	10,000pcs
B2542MB1AB20B	AWG#22-#28	1.7mm(MAX)	BRASS	GOLD-PLATED	10,000pcs

△				GENERAL TOLERANCE		UNIT: mm		DATE		TITLE: 杜邦 2.54 母Terminal 短体		
△				.X±0.30	X°±1°	DRAWN:	朱佑武	2012.10.18				
△				.XX±0.20	.X°±	CHECKED:						
△				.XXX±0.10	.XX°±	APPROVED:						
LTR	NAME	DATE	VERISION RECORD							VER.	SCALE:	N/A
										A	SHEET:	1/1



PROJECTION PART NO. B2542M*1AB20B

DRAWING NO. 2542T02-1-S

1 2 3 4 5 6 7 8 9

A

B

C

D

E

F

A

B

C

D

E

F

1 2 3 4 5 6 7 8 9

1 2 3 4 5 6 7 8 9

A

B

C

D

E

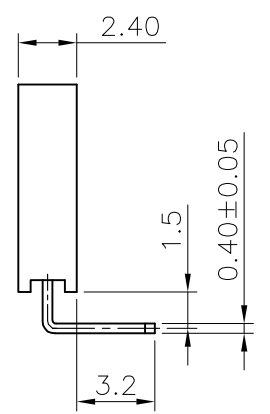
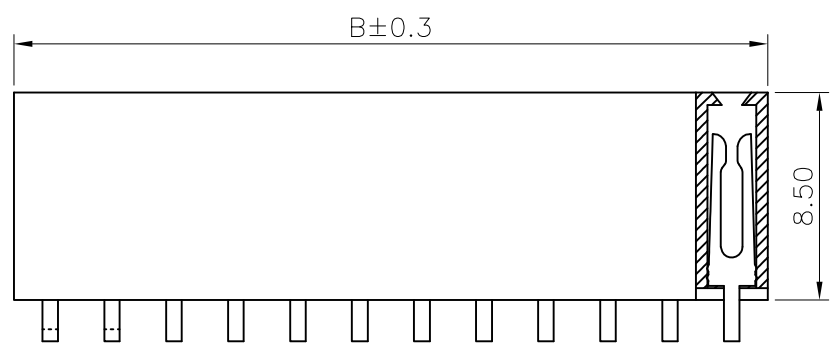
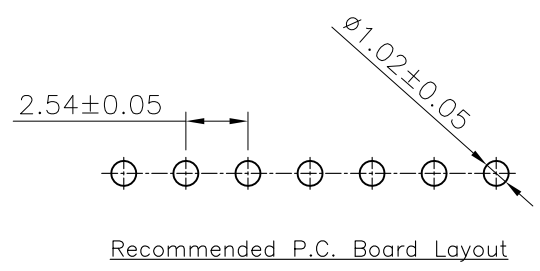
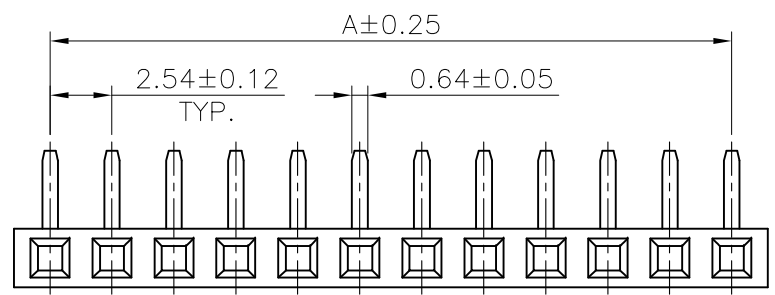
F

◆ SPECIFICATIONS

- Current rating: 3A AC, DC
- Voltage rating: 250V AC, DC
- Temperature range: -25°C ~ +85°C
- Insulation resistance: 1000MΩ Min.
- Withstanding voltage: 1500V AC/ minute.
- Contact resistance: 20mΩ Max.

Material:

Insulator: PBT UL 94V-0
 Contact: Brass
 Plating: Gold flash plated over Nickel
 Circuits: 2~40
 Suitable KR2542 series pin header



$A = 2.54 \times (\text{CIRCUITS} - 1)$
 $B = A + 2.3$

C2542MR***50PB30
 CIRCUITS:
 002=2P
 040=40P

△				GENERAL TOLERANCE	UNIT: mm	DATE	TITLE:		
△				.X±0.30	X°±1°	DRAWN: 朱佑武	杜邦2.54单排 DIP		
△				.XX±0.20	.X°±	CHECKED:	90° female header		
△				.XXX±0.10	.XX°±	APPROVED:	VER.	SCALE: 3:1	
LTR	NAME	DATE	VERSION RECORD				A	SHEET: 1/1	

东莞市康瑞电子有限公司
 DongGuan A Rui Electronic Co. LTD.

PROJECT	PART NO.	C2542MR0**50PB30
DRAWING NO.		2542WFHD101-5-S

1 2 3 4 5 6 7 8 9

◆SPECIFICATIONS

- Current rating: 3A AC, DC
- Voltage rating: 250V AC,DC
- Temperature range: -25°C ~ +85°C
- Insulation resistance: 1000MΩ Min.
- Withstanding voltage: 1500V AC/ minute.
- Contact resistance: 20m Ω Max.

Material:

Insulator: PBT UL 94V-0

Contact: Brass

Plating: Gold flash plated over Nickel

Circuits: 2~40

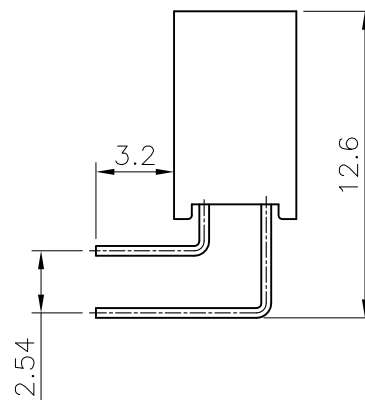
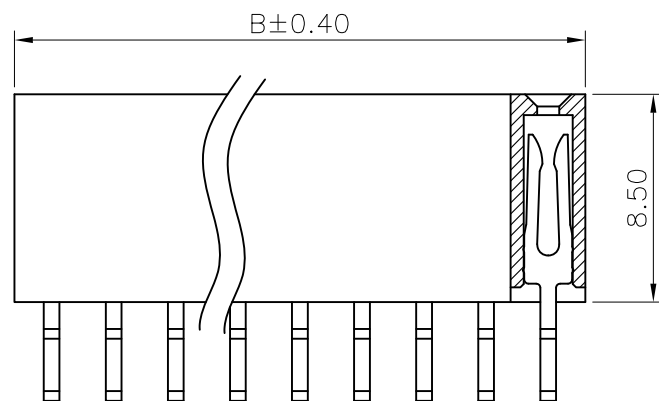
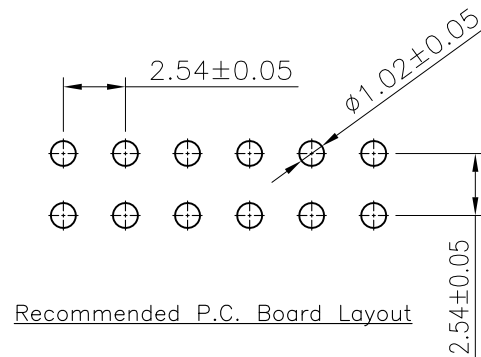
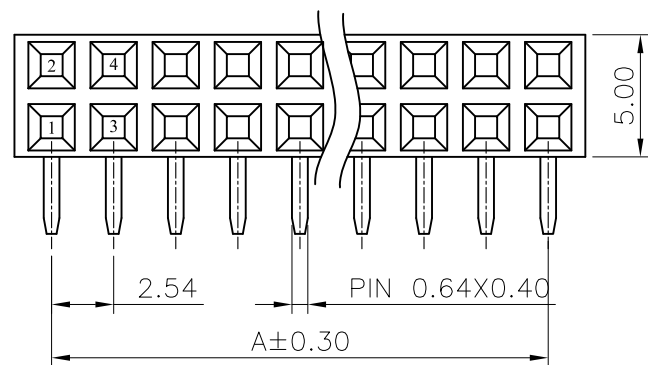
Suitable KR2542 series pin header

$$A = 2.54 \times (\text{CIRCUITS} - 1)$$

$$B = A + 2.3$$

C2542MR***50PB30

CIRCUITS:
 202=4P
 240=80P



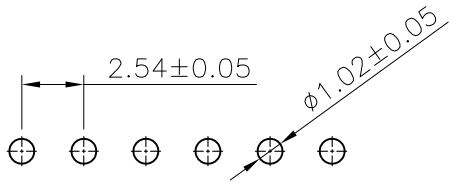
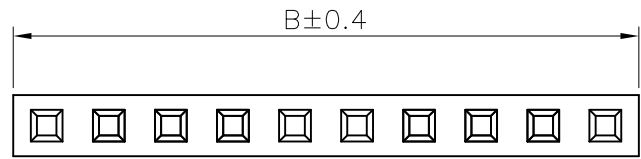
△				GENERAL TOLERANCE	UNIT: mm	DATE	TITLE:		
△				.X±0.30	X°±1°	DRAWN: 朱佑武	杜邦2.54双排 DIP		
△				.XX±0.20	.X°±	CHECKED:	90° female header		
△				.XXX±0.10	.XX°±	APPROVED:	VER.	SCALE:	3:1
LTR	NAME	DATE	VERISION RECORD				A	SHEET:	1/1



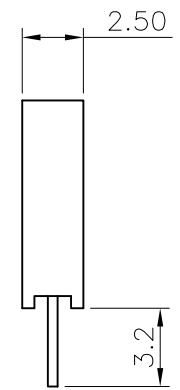
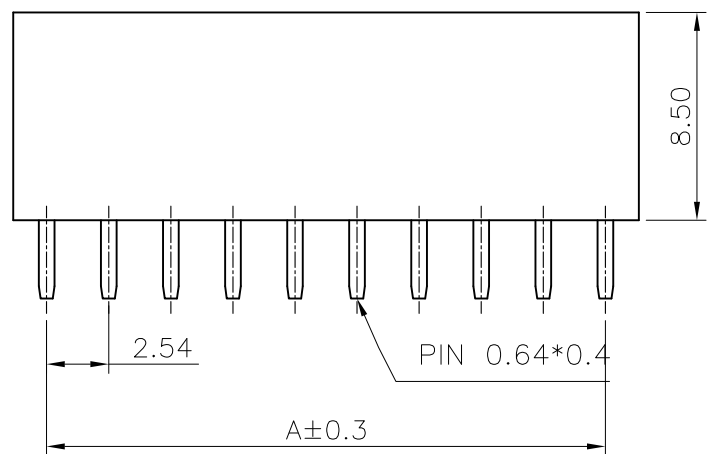
东莞市康瑞电子有限公司
DongGuan A Rui Electronic Co. LTD.

PROJECT PART NO. C2542MR2**50PB30

DRAWING NO. 2542WFHD201-5-S



Recommended P.C. Board Layout



◆ SPECIFICATIONS

- Current rating: 3A AC, DC
- Voltage rating: 250V AC, DC
- Temperature range: -25°C ~ +85°C
- Insulation resistance: 1000MΩ Min.
- Withstanding voltage: 1500V AC/ minute.
- Contact resistance: 20mΩ Max.

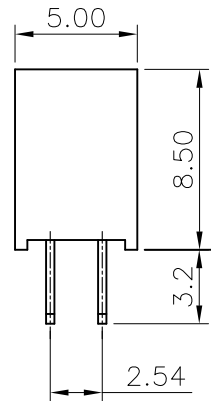
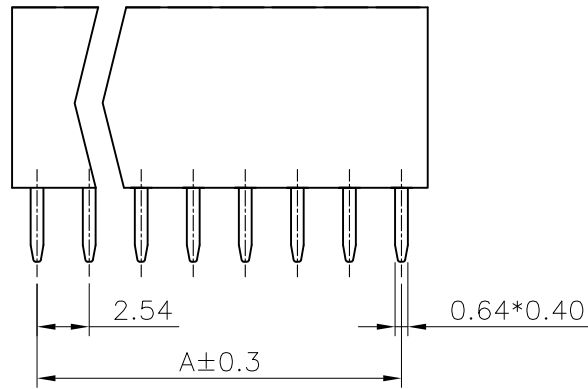
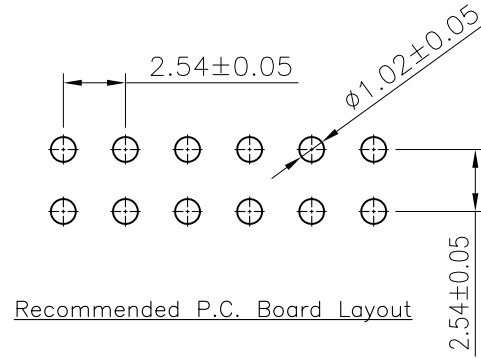
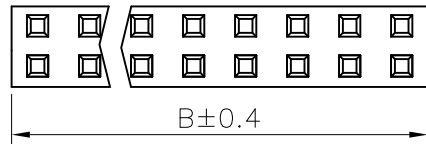
Material:

Insulator: PBT UL 94V-0
 Contact: Brass
 Plating: Gold flash plated over Nickel
 Circuits: 1~40
 Suitable KR2542 series pin header

$A = 2.54 \times (\text{CIRCUITS} - 1)$
 $B = A + 2.3$

C2542MV***50PB30
 CIRCUITS: 1
 001=1P
 040=40P

<table border="1"> <tr> <td>⚠</td> <td></td> <td></td> <td></td> </tr> <tr> <td>⚠</td> <td></td> <td></td> <td></td> </tr> <tr> <td>⚠</td> <td></td> <td></td> <td></td> </tr> <tr> <td>⚠</td> <td></td> <td></td> <td></td> </tr> </table>				⚠				⚠				⚠				⚠				GENERAL TOLERANCE .X±0.30 X°±1° .XX±0.20 .X°± .XXX±0.10 .XX°±		UNIT: mm DRAWN: 朱佑武 2013.7.30 CHECKED: APPROVED:		DATE 2013.7.30		TITLE: 杜邦2.54单排 DIP 180° female header		东莞市康瑞电子有限公司 DongGuan A Rui Electronic Co. LTD.	
⚠																													
⚠																													
⚠																													
⚠																													
LTR NAME DATE VERISION RECORD								VER. SCALE: 1:1 A SHEET: 1/1		PROJECT PART NO. C2542MV0**50PB30 DRAWING NO. 2542WFVD101-5-S																			
1	2	3	4	5	6	7	8	9																					



◆SPECIFICATIONS

- Current rating: 3A AC, DC
- Voltage rating: 250V AC,DC
- Temperature range: -25°C ~ +85°C
- Insulation resistance: 1000MΩ Min.
- Withstanding voltage: 1500V AC/ minute.
- Contact resistance: 20m Ω Max.

Material:

Insulator: PBT UL 94V-0

Contact: Brass

Plating: Gold flash plated over Nickel

Circuits: 2~40

Suitable KR2542 series pin header

$A = 2.54 \times (\text{CIRCUITS} - 1)$
 $B = A + 2.3$

C2542MV***50PB30

CIRCUITS:
 202=4P
 240=80P

△				GENERAL TOLERANCE	UNIT: mm	DATE	TITLE:		
△				.X±0.30	X°±1°	DRAWN: 朱佑武	杜邦2.54双排 DIP		
△				.XX±0.20	.X°±	CHECKED:	180° female header		
△				.XXX±0.10	.XX°±	APPROVED:	VER.	SCALE:	3:1
LTR	NAME	DATE	VERSION RECORD				A	SHEET:	1/1



东莞市康瑞电子有限公司
 DongGuan A Rui Electronic Co. LTD.

PROJECT PART NO. C2542MV2**50PB30

DRAWING NO. 2542WFVD201-5-S

1 2 3 4 5 6 7 8 9

A

B

C

D

E

F

A

B

C

D

E

F

1 2 3 4 5 6 7 8 9

1 2 3 4 5 6 7 8 9

A

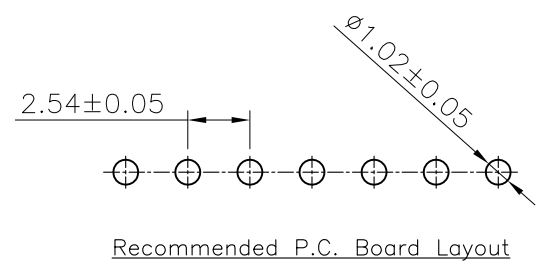
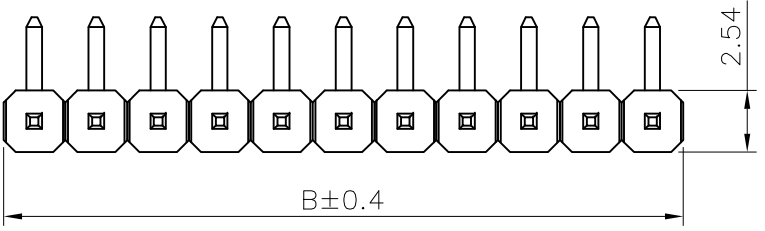
B

C

D

E

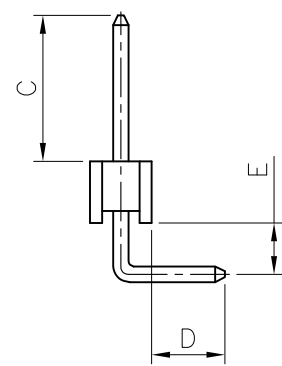
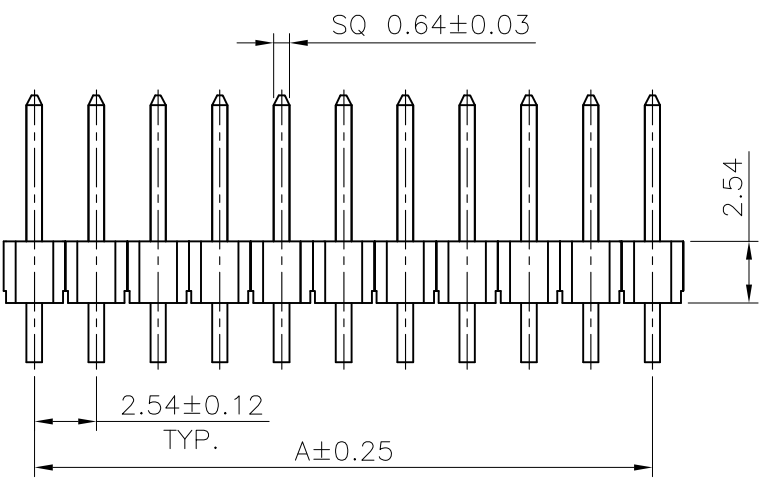
F



- ◆ SPECIFICATIONS
- Current rating: 3A AC, DC
 - Voltage rating: 250V AC, DC
 - Temperature range: -25°C ~ +85°C
 - Insulation resistance: 1000MΩ Min.
 - Withstanding voltage: 1500V AC/ minute.
 - Contact resistance: 20mΩ Max.

Material:
 Insulator: PBT UL 94V-0
 Contact: Brass
 Plating: Gold flash plated over Nickel
 Circuits: 2~40

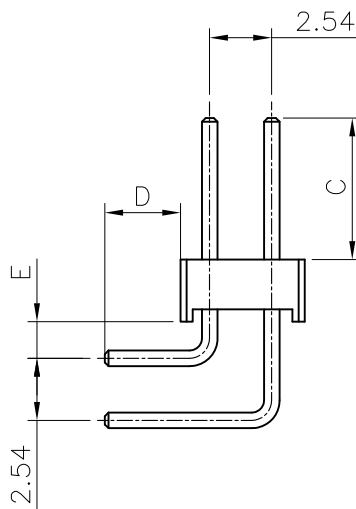
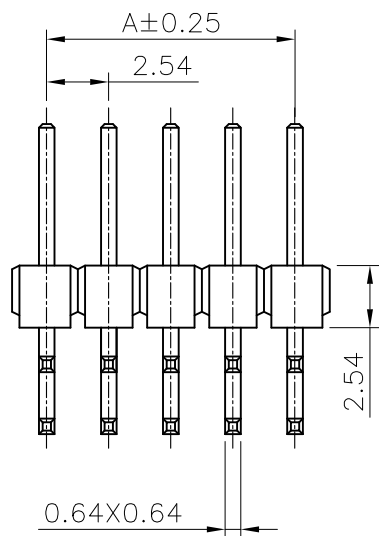
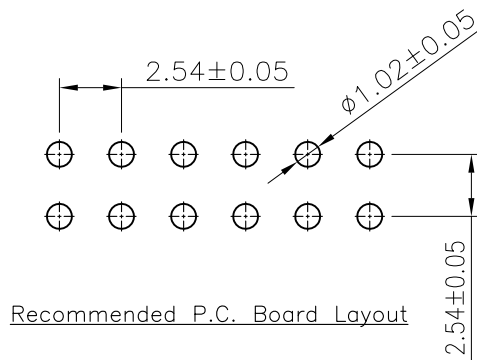
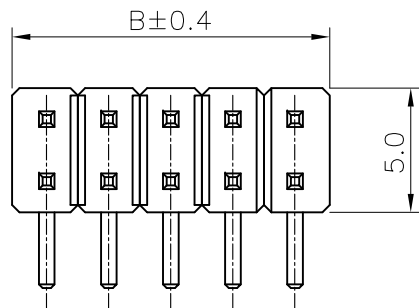
A = 2.54 × (CIRCUITS - 1)
 B = A + 2.3



C2542RD***50PB30
 CIRCUITS:
 002=2P
 040=40P

▲ ▲ ▲ ▲			GENERAL TOLERANCE		UNIT: mm		DATE		TITLE: 杜邦2.54 单排90° pin header			东莞市康瑞电子有限公司 DongGuan A Rui Electronic Co. LTD.
			.X ± 0.30	X° ± 1°	DRAWN: 朱佑武		2013.3.28		VER. SCALE: 3:1			
			.XX ± 0.20	.X° ±	CHECKED:				PROJECT PART NO. C2542RD0**50PB30			
			.XXX ± 0.10	.XX° ±	APPROVED:				DRAWING NO. 2542WMHD101-5-S			
LTR	NAME	DATE	VERISION RECORD									

1 2 3 4 5 6 7 8 9



◆ SPECIFICATIONS

- Current rating: 3A AC, DC
- Voltage rating: 250V AC, DC
- Temperature range: -25°C ~ +85°C
- Insulation resistance: 1000MΩ Min.
- Withstanding voltage: 1500V AC/ minute.
- Contact resistance: 20mΩ Max.

Material:

Insulator: PBT UL 94V-0

Contact: Brass

Plating: Gold flash plated over Nickel

Circuits: 2x2~2x40

$A = 2.54 \times (\text{CIRCUITS} - 1)$
 $B = A + 2.3$

C2542RD***50PB30

CIRCUITS:
 202=4P
 240=80P

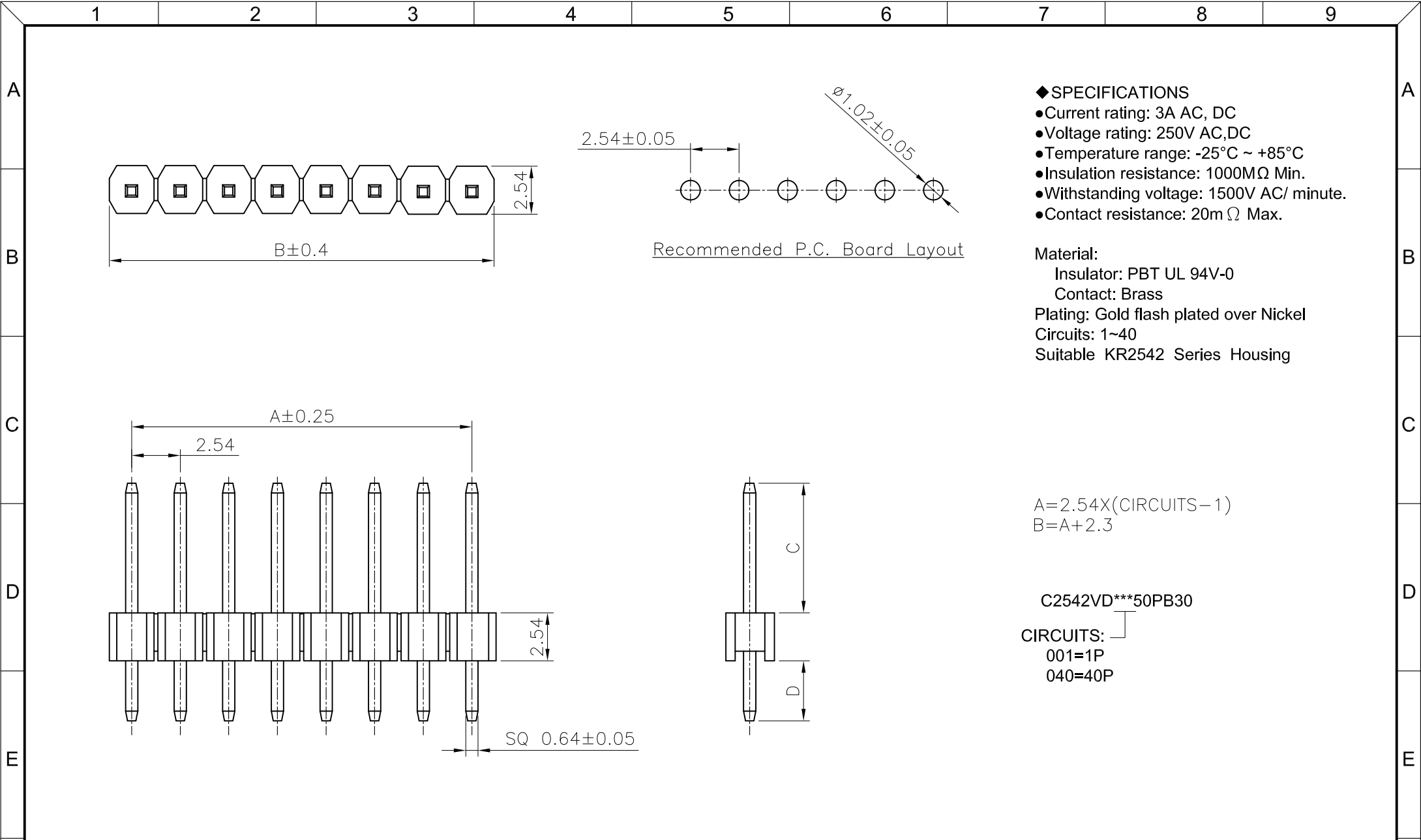
△				GENERAL TOLERANCE		UNIT: mm	DATE	TITLE: 杜邦2.54 双排 90° pin header		
△				.X±0.30	X°±1°	DRAWN: 朱佑武	2013.7.30			
△				.XX±0.20	.X°±	CHECKED:				
△				.XXX±0.10	.XX°±	APPROVED:				
LTR	NAME	DATE	VERISION RECORD					VER.	SCALE:	1:1
1	2	3	4	5	6	7	8	A	SHEET:	1/1



东莞市康瑞电子有限公司
 DongGuan A Rui Electronic Co. LTD.

PROJECT PART NO. C2542RD2**50PB30

DRAWING NO. 2542WMHD201-5-S



◆ SPECIFICATIONS


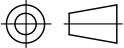
- Current rating: 3A AC, DC
- Voltage rating: 250V AC, DC
- Temperature range: -25°C ~ +85°C
- Insulation resistance: 1000MΩ Min.
- Withstanding voltage: 1500V AC/ minute.
- Contact resistance: 20mΩ Max.

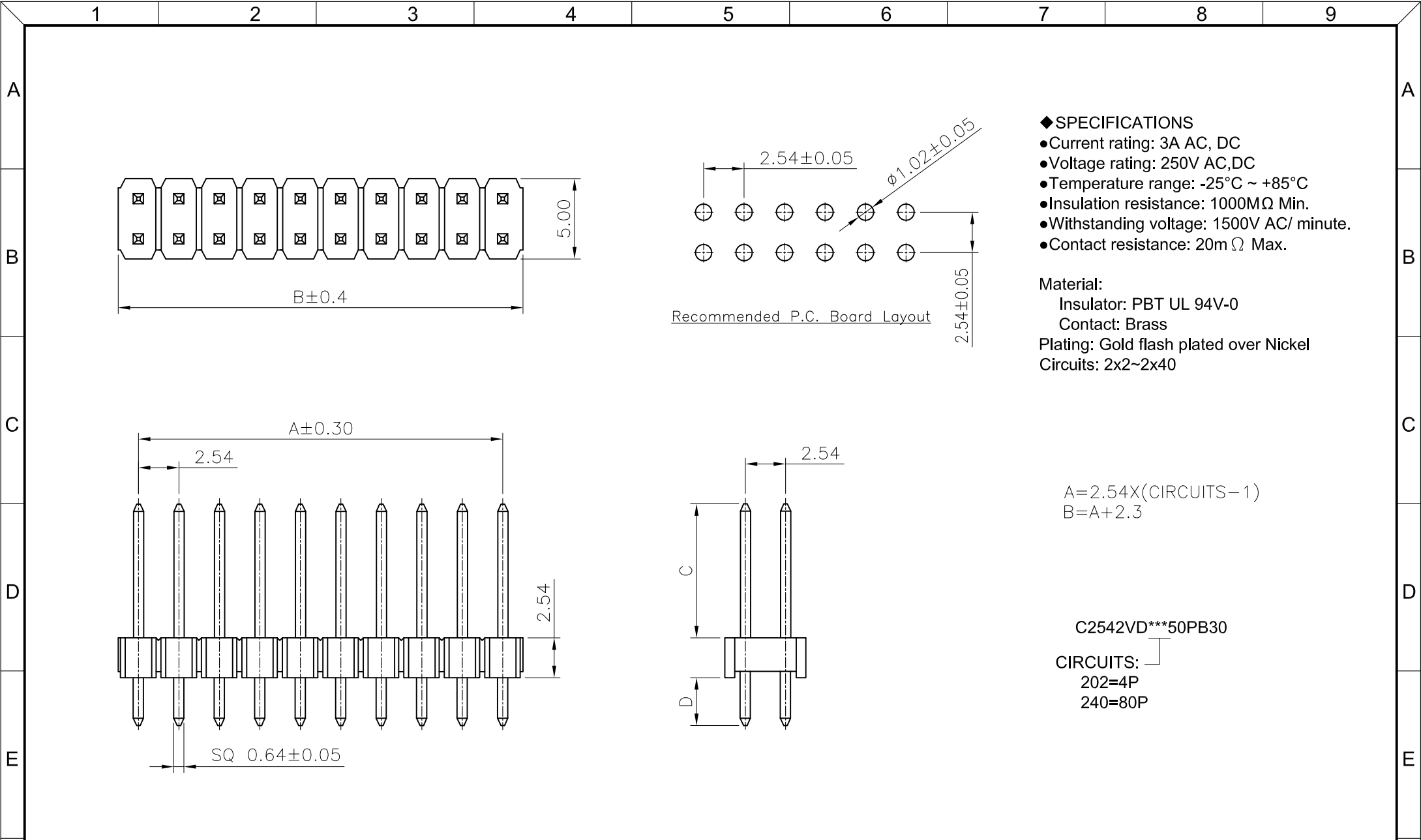
Material:

Insulator: PBT UL 94V-0
 Contact: Brass
 Plating: Gold flash plated over Nickel
 Circuits: 1~40
 Suitable KR2542 Series Housing

$A = 2.54 \times (\text{CIRCUITS} - 1)$
 $B = A + 2.3$

C2542VD***50PB30
 CIRCUITS:
 001=1P
 040=40P

<table border="1"> <tr> <td>△</td> <td></td> <td></td> <td></td> </tr> <tr> <td>△</td> <td></td> <td></td> <td></td> </tr> <tr> <td>△</td> <td></td> <td></td> <td></td> </tr> <tr> <td>△</td> <td></td> <td></td> <td></td> </tr> </table>				△				△				△				△				GENERAL TOLERANCE .X ± 0.30 X° ± 1° .XX ± 0.20 .X° ± .XXX ± 0.10 .XX° ±		UNIT: mm DRAWN: 朱佑武 2013.11.19 CHECKED: APPROVED:		DATE 2013.11.19		TITLE: 杜邦2.54 单排 180° pin header			 东莞市康瑞电子有限公司 DongGuan A Rui Electronic Co. LTD.		
△																															
△																															
△																															
△																															
LTR NAME DATE VERISION RECORD								VER. SCALE: N/A A SHEET: 1/1			PROJECT PART NO. C2542VD0**50PB30																				
								 DRAWING NO. 2542WMVD101-5-S																							


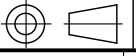


- ◆ SPECIFICATIONS
- Current rating: 3A AC, DC
 - Voltage rating: 250V AC, DC
 - Temperature range: -25°C ~ +85°C
 - Insulation resistance: 1000MΩ Min.
 - Withstanding voltage: 1500V AC/ minute.
 - Contact resistance: 20mΩ Max.

Material:
 Insulator: PBT UL 94V-0
 Contact: Brass
 Plating: Gold flash plated over Nickel
 Circuits: 2x2~2x40

$A = 2.54 \times (\text{CIRCUITS} - 1)$
 $B = A + 2.3$

C2542VD***50PB30
 CIRCUITS:
 202=4P
 240=80P

<table border="1"> <tr> <td>△</td> <td></td> <td></td> <td></td> </tr> <tr> <td>△</td> <td></td> <td></td> <td></td> </tr> <tr> <td>△</td> <td></td> <td></td> <td></td> </tr> <tr> <td>△</td> <td></td> <td></td> <td></td> </tr> </table>				△				△				△				△				GENERAL TOLERANCE .X ± 0.30 X° ± 1° .XX ± 0.20 .X° ± .XXX ± 0.10 .XX° ±		UNIT: mm DRAWN: 朱佑武 2013.7.30 CHECKED: APPROVED:		DATE 2013.7.30		TITLE: 杜邦2.54 双排 180° pin header		 东莞市康瑞电子有限公司 DongGuan A Rui Electronic Co. LTD.	
△																													
△																													
△																													
△																													
PROJECT PART NO. C2542VD2**50PB30				VER. SCALE: 1:1 A SHEET: 1/1				 DRAWING NO. 2542WMVD201-5-S																					
1	2	3	4	5	6	7	8	9	1	2	3																		