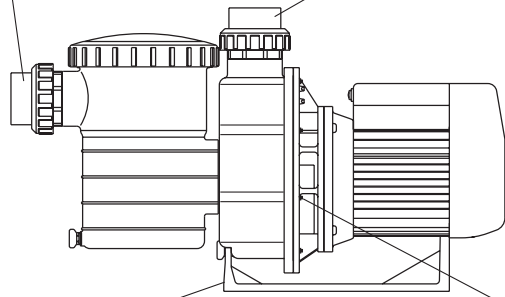


SUCTION PORT FROM POOL
OR VACUUM FILTER

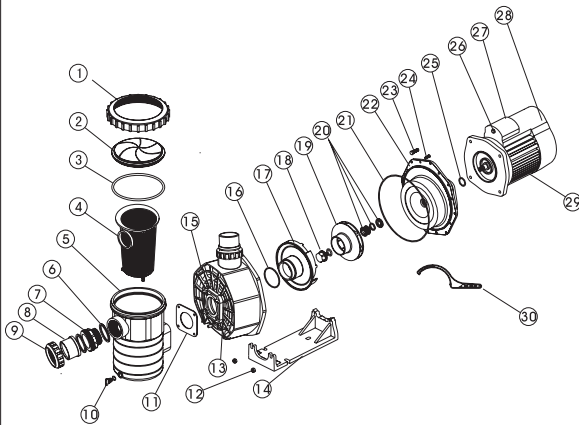
DISCHARGE PORT TO
FILTER OR POOL

PUMP MAY BE BOLTED TO LEVER
FOUNDATION OR MOUNTING BRACKET

STAINING SCREWS
OF PUMP BODY

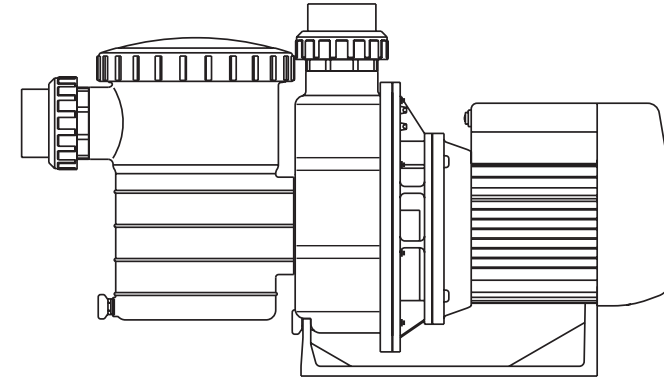


PARTS OF PUMP



Key NO.	Description
1	Lid lock ring
2	Lid
3	O'ring
4	Basket
5	Hair with lint pot
6	O'ring bulkhead
7	Bulkhead fitting
8	Adaptor bulkhead
9	Nut bulkhead
10	Drain plug with o'ring
11	Gasket
12	Nut
13	Screw
14	1HP,1.5HP 2HP,3HP Base
15	Pump body
16	O'ring
17	Diffuser
18	Screw with o'ring
19	Impeller
20	Shaft seal
21	O'ring
22	Flange
23	Screw
24	Screw
25	1HP,1.5HP O'ring 2HP,3HP
26	Over load switch
27	Irdome
28	1HP,1.5HP 2HP, 3HP Cover
29	Motor
30	Opening key

AP Series Centrifugal Pump Installation & Operating Instructions



INSTALLATION

Only qualified, licensed personnel should install pump and wiring.

IMPORTANT ELECTRICAL

Electrical Contractors Please Note: All 220 volt 50 Hz AQUA pumps must be wired to the main power supply through an approved and correctly rated contactor.

Pump Mount Must:

- ❖ Be solid Level Rigid Vibration Free.
- ❖ Allow pump suction inlet height to be as close to water level as possible.
- ❖ Allow use of short, direct suction pipe (To reduce friction losses.)
- ❖ Allow for gate valves in suction and discharge piping.
- ❖ Have adequate floor drainage to prevent flooding.
- ❖ Be protected from excess moisture.
- ❖ All adequate access for servicing pump and piping.

NOTICE:

Pump suction and discharge connections have moulded in thread stops, **DO NOT** try to screw pipe in beyond these stops.

starting motor.
before removing lid:
TOP PUMP before proceeding.
CLOSE GATE VALVES in suction and discharge pipes.
RELEASE ALL PRESSURE from pump and piping system.
NEVER tighten or loosen screws while pump is operation.
Do not block pump suction! To do so with body may cause severe or fatal injury. Children using pool must **ALWAYS** have close adult supervision!

Priming Pump:

Release all air from filter and piping system: see filter owner manual.
In a flooded suction system (water source higher than pump), pump will prime itself when suction and discharge valves are opened.
If pump is not in a flooded suction system, unscrew and remove trap cover; fill trap and pump with water.
Clean and inspect Ring; re-install on trap cover.
Replace trap cover on trap; turn clockwise to tighten cover.
NOTICE: Tighten trap cover by hand only.
Pump should prime now. Priming time will depend on vertical length of suction lift and horizontal length of suction piping.

Routine Maintenance

Regular scheduled is inspection/cleaning of trap basket. Debris or trash that can block or flow through the pump. Follow instructions below to clean trap: stop pump, turn suction and discharge, and release all pressure from system before cleaning (see instructions above).
Be sure all holes in basket are clear, flush basket with water and clean pipe connection port (between ribs provided). If basket is stuck, remove from trap body.
Reinstall on trap cover.
Replace lid. To help keep lid from sticking, tighten hand tight screws (see instructions above)

the following information when ordering repair parts:

1. Unit nameplate data or serial number on label.
2. Description of part.

TROUBLE SHOOTING

MOTOR DOES NOT START

1. Disconnect switch or circuit breaker in off position
2. Fuses blown or thermal overload open
3. Locked motor shaft
4. Motor windings burned out
5. Defective starting switch inside single phase motor
6. Disconnected or defective wiring
7. Low voltage

PUMP DOES NOT REACH FULL SPEED

1. Low voltage
2. Pump connected for wrong voltage

MOTOR OVERHEATS (protector trips)

1. Low voltage
2. Motor windings connected for wrong voltage on dual voltage model
3. Inadequate ventilation

PUMP DELIVERS NO WATER

1. Pump is not primed
2. Closed valve in suction or discharge line
3. Leakage or air into suction system
4. Impeller clogged

LEAKAGE OF WATER AT SHAFT

1. Shaft seal requires replacement

LOW PUMP CAPACITY

1. Valve in suction or discharge line partly closed
2. Suction or discharge line partly plugged
3. Suction or discharge line too small
4. Plugged basket in skimmer or hair and lint strainer
5. Dirty filter
6. Impeller clogged

HIGH PUMP PRESSURE

1. Discharge valve or inlet fittings closed too much
2. Return lines too small
3. Dirty filters

NOISY PUMP AND MOTOR

1. Plugged basket in skimmer or hair in lint strainer
2. Worn motor bearings
3. Valve in suction line partly closed
4. Suction line partly plugged
5. Vacuum hose plugged or too small
6. Pump not supported properly

AIR BUBBLES AT INLET FITTINGS

1. Leakage of air into suction line at connections or valve stem
2. Cover gasket of hair and lint strainer needs cleaning
3. Low water level in pool

NOTE: If the recommendations in the trouble shooting portion of this manual do not solve your particular problem(s), please contact your local dealer for service.