



## 6FM250S (12V250Ah)

LONGWAY® 6FM250S is specially designed for green energy systems. 6FM250S have a good deep cycle property, maintenance-free. It can be used for more than 350 cycles at 100% discharge in cycle service, up to 12 years in standby service.



ISO 9001:2008 Standard



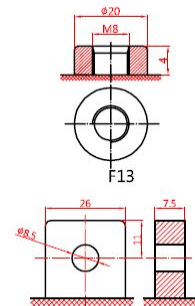
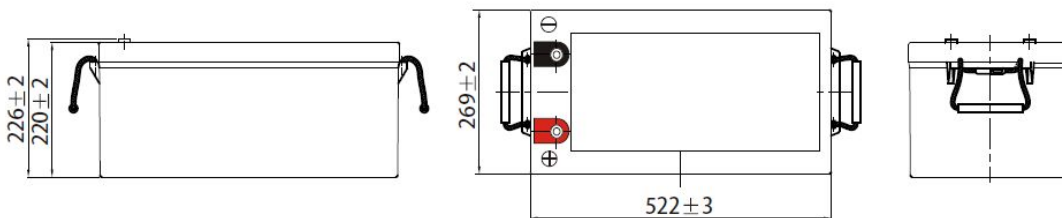
ISO 14001:2004 Standard



### Specifications:

Cells per Unit	6
Normal Voltage	12V
Capacity	250Ah@10Hr-rate to 1.80V per cell@25°C
	288Ah@100Hr-rate to 1.90V per cell@25°C
Weight	Approx. (74±3%) kg (163.1lbs)
Maximum Discharge Current	2500A(5sec)
Internal Resistance	Approx. 3.5mΩ full charged @25°C
Operating Temperature Range	Discharge: -20°C~60°C
	Charge: 0°C~50°C
	Storage: -20°C~60°C
Nominal Operating Temperature Range	25°C±3°C
Float Charging Voltage	13.7~13.9VDC/unit Average @25°C
Maximum Charging Current	62.5A
Equalization and Cycle Service	14.4V~15.0VDC/unit Average @ 25°C
Self Discharge	LONGWAY Valve Regulated Lead Acid (VRLA) batteries can be stored for more than 6 months at 25°C. Self-discharge ratio less than 3% per month at 25°C. Please charge batteries before using.
Terminal	Terminal F24
Container Material	ABS(UL94-HB) *Flammability resistance of (UL94-V0) can be available upon request

**Dimensions:** L520\*W269\*H220(TH245)



F19

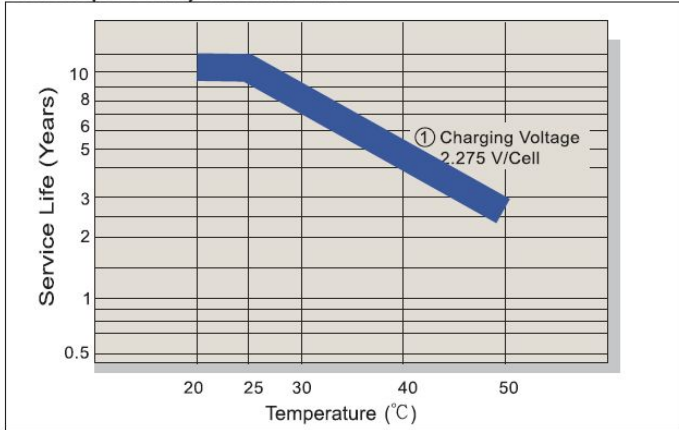
### Constant Current Discharge Characteristics (A, 25 °C)

F.V/TIME	15min	30min	60min	2h	3h	5h	8h	10h	20h	48h	100h
9.60	452.5	282.5	162.5	97.87	67.24	45.68	30.60	25.38	13.32	6.19	3.00
9.90	443.5	276.9	159.3	97.39	66.91	45.45	30.30	25.25	13.26	6.09	2.99
10.2	434.4	271.2	156.0	95.95	66.25	45.00	30.18	25.15	13.20	5.98	2.94
10.5	420.8	262.7	151.1	95.00	65.59	44.55	30.00	25.06	13.16	5.91	2.90
10.8	412.7	257.6	148.2	94.03	64.93	44.10	29.40	25.00	13.13	5.81	2.88

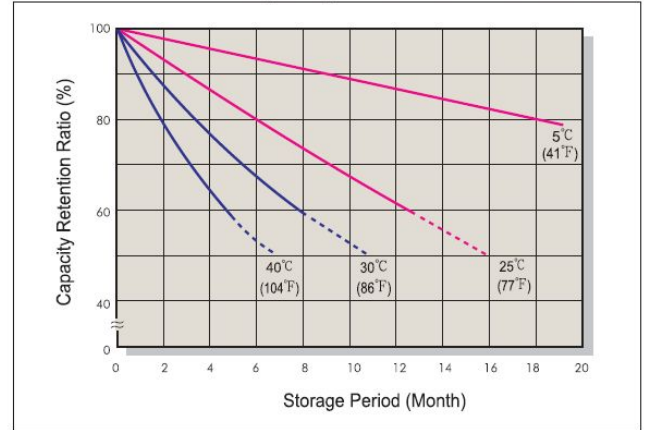
### Constant Power Discharge Characteristics (Watt, 25 °C)

F.V/TIME	15min	30min	60min	2h	3h	5h	8h	10h	20h	48h	100h
9.60	4993	3221	1882	1133	790.8	539.9	367.2	303.0	159.9	12.35	5.99
9.90	4893	3156	1815	1128	786.9	537.2	363.6	301.5	159.1	12.14	5.97
10.2	4793	3092	1778	1111	779.1	531.9	362.2	300.3	158.4	11.92	5.86
10.5	4643	2995	1723	1100	771.3	526.6	360.0	299.2	157.9	11.79	5.78
10.8	4554	2937	1689	1089	763.5	521.3	352.8	298.5	157.5	11.60	5.74

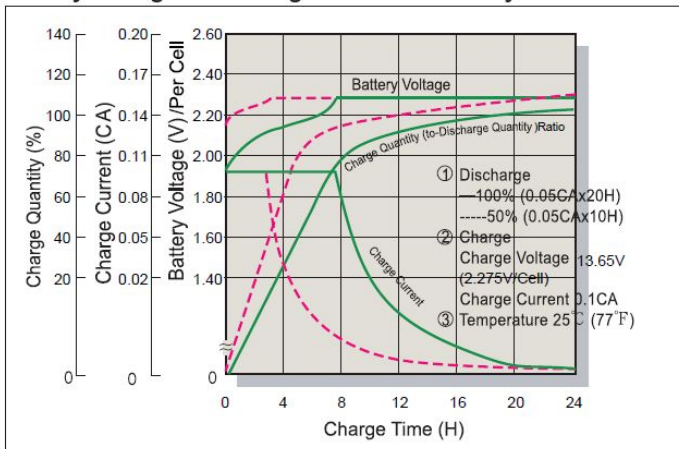
### Trickle (or Float) Service Life



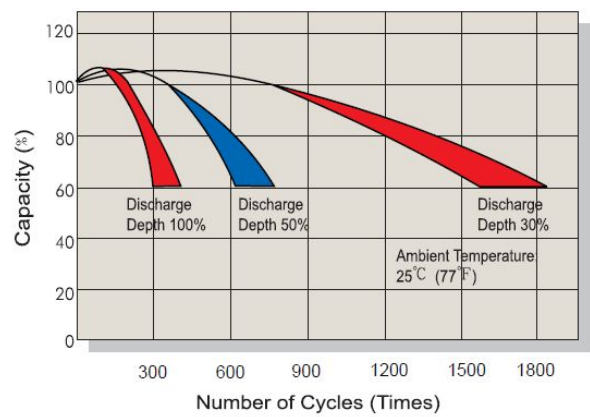
### Capacity Retention Characteristic



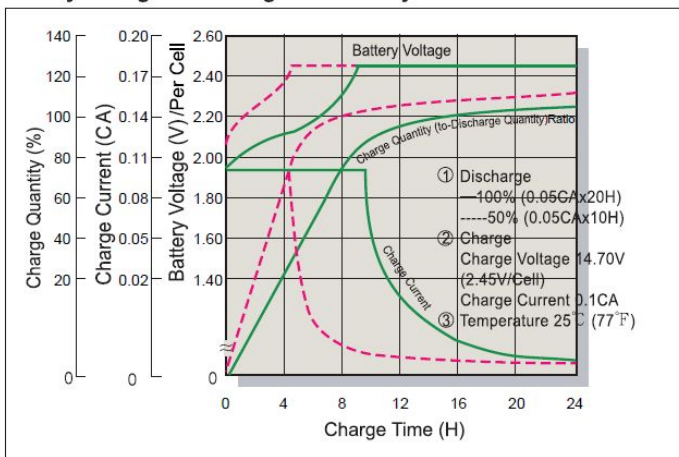
### Battery Voltage and Charge Time for Standby Use



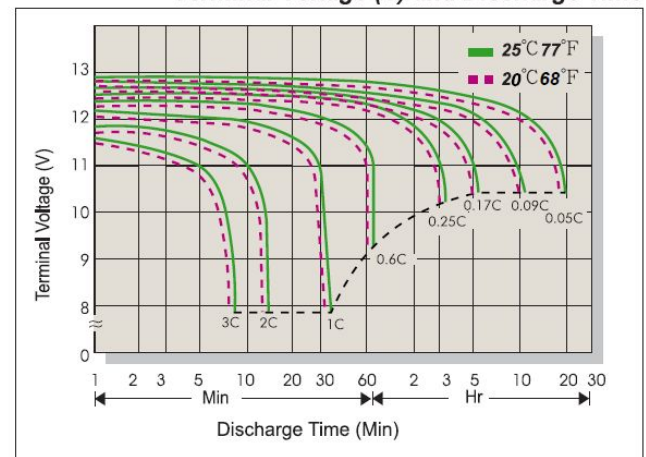
### Cycle Service Life



### Battery Voltage and Charge Time for Cycle Use



### Terminal Voltage (V) and Discharge Time



### Charging Procedures

Application	Charge Voltage(V/cell)			Max. Charge Current
	Temperature	Set Point	Allowable Range	
Cycle Use	25°C(77°F)	2.45	2.40~2.50	0.25 C
Standby	25°C(77°F)	2.275	2.25~2.30	

### Discharge Current VS. Discharge Voltage

Final Discharge Voltage V/cell	1.75	1.70	1.65	1.60
Discharge Current (A)	0.2C > (A)	0.2C < (A)	0.5C < (A)	(A) > 1.0C

KaiYing Power Supply & Electrical Equip Co., Ltd.

Address: KaiYing Industrial Park, ChengXiang Town, Anxi, Quanzhou, Fujian China

Tel: 86-595-68782266 Fax: 86-0595-68782222

Website: [www.longwaybattery.com](http://www.longwaybattery.com) Email: [Sales@longwaybattery.com](mailto:Sales@longwaybattery.com)