

# AUTOMATIC FILM APPLICATOR

## BEVS 1811/1

### User Manual



This manual shall be read carefully before starting. Directions included in this operation manual shall be strictly followed.

---

## Content

|  |    |
|--|----|
| 1 Company Profile .....                | 3  |
| 2 Product Introduction.....            | 4  |
| 3 Safety Instructions .....            | 4  |
| 4 Product Operation Introduction ..... | 6  |
| 5 Maintain.....                        | 9  |
| 6 Attention .....                      | 9  |
| 7 Packing List.....                    | 10 |

---

## 1 Company Profile

BEVS Industrial Co., Ltd. is a leading manufacturer that specializes in coatings, ink, painting, resin testing instruments and laboratory whole solution.

We offer the complete and unique products in this field to meet customer's challenging demands of today and tomorrow, the products are complied with the standards of ISO, ASTM, DIN, BS, EN etc.

With strong supports and hard work by lots of end-users and worldwide agents, BEVS become more and more famous in the world and provides more competitive values for our customers.

---

## 2 Product Introduction

In order to obtain reproducible results from physical, appearance and chemical performance testing of surface coatings, it is essential to prepare uniform films of controlled thicknesses.

This can be difficult to achieve with hand application methods which often result in variations between operators, and for this reason automatic application methods are recommended.

BEVS automatic instruments have been designed to produce consistent results when used with a wide range of different applicators e.g. Block Spreaders, Wire Wound Bars, Bird Type Applicators, Sag Index Applicators, Sagging and Leveling Testers and many others in order to provide the benefits of reproducibility and control of application.

These instruments have a unique drive system that has been designed to run smoothly with all types of coating material at all film thicknesses to eliminate the “banding“ that can occur with thin film coatings such as inks and transparent coatings such as wood stains or automotive clear coats.

### 2.1 Big LED design, touch screen operation

### 2.2 Technical Specification

2.2.1 Item Number: BEVS1811/1 (other item BEVS1811/2 and BEVS1811/3 same as)

2.2.2 Maximum Film Length: 360mm

2.2.3 Speed: 50mm/s-300mm/s (Adjustable)

2.2.4 Speed Precision: 1mm/s

2.2.5 Stroke Length is Adjustable

2.2.6 Intended use

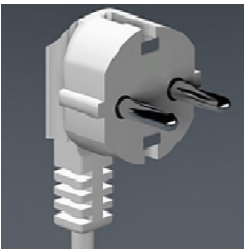
Paint, coating, printing materials etc.

## 3 Safety Instructions

1. Read this instruction manual carefully before switching on the instrument.



2. Keep this instruction manual for future reference.
3. Observe all safety and warning markings on the instrument.
4. This instrument must only be used in areas electrically classified as NON HAZARDOUS.
5. Ensure that voltage label on the instrument matches your local supply.

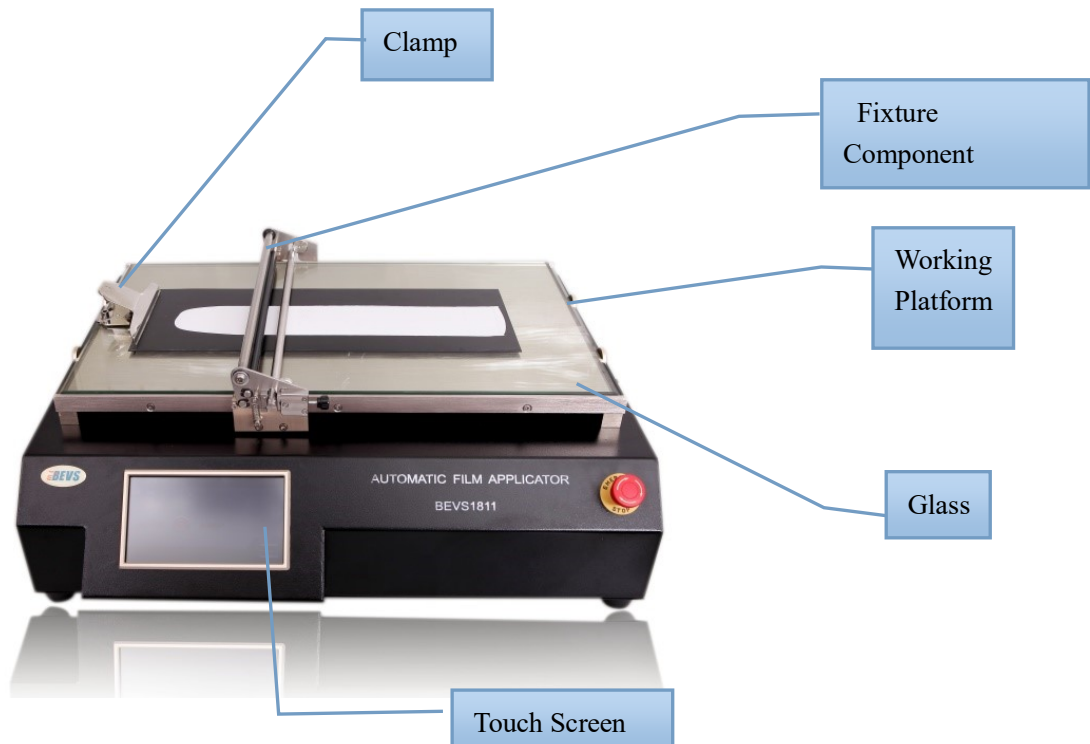


6. This equipment must be earthed any interruption to the mains earth conductor will make the instrument dangerous.
7. Ensure the unit is placed on a solid level surface
8. Moving parts for processing are not protected with guard, because the movement is limited and speed is not high. After risk assessment, we verified the risk from moving parts is low and warning about the residual risk as below:

|                            |                               |                      |
|----------------------------|-------------------------------|----------------------|
|                            |                               |                      |
| <b><i>Moving parts</i></b> | <b><i>impact/crushing</i></b> | <b><i>impact</i></b> |

## 4 Product Operation Introduction

### 4.1 Construction



### 4.2 Operation Steps

1. Place the instruments in the horizontal plane
2. Clean the glass to avoid the influence by dust
3. Install and clamp the testing plate
4. Turn on the power switch
5. Refer to the 3.3, Touch Screen Operation
6. Press the “Run” button to start testing

### 4.3 Touch Screen Operation



4.3.1 Connect the power (220V 50Hz)



4.3.2 Turn on the power switch

4.3.3 Enter the welcome screen and select the language

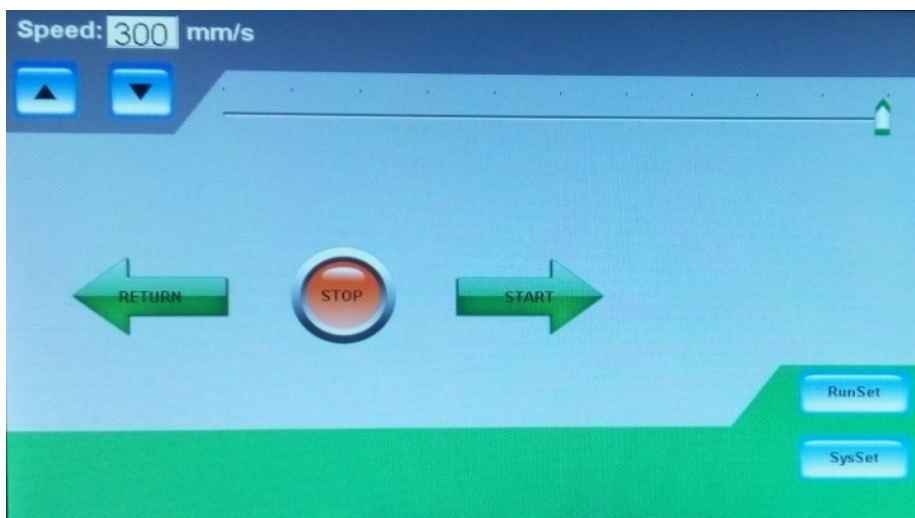


#### 4.3.4 Preset the speed

1) Setting by button: Press  button to increase the speed, press  button to decrease the speed, Long pressing can increase and decrease the speed quickly.

2) Setting by slide button: Slide  to the right to increase the speed, slide  to the left to decrease the speed.

**Attention: Different samples need different speed for better film application, please try several times to attain a suitable speed.**



4.3.5 Make sure that the glass platform is clean, place the applicator or wire bar coater smoothly; Put the coating in front of the applicator.

4.3.6 Make sure that all the testing condition is ready, then press “Start” button to start testing.

4.3.7 Press “Stop” button to end the testing, the machine will stop when the stroke length is

reaching the setting stroke length.


4.3.8 Take out the test paper and press “Return” button to have the next testing.

#### 4.4 Specification Setting

##### 4.4.1 “Run Setting”

1) Open this setting screen to set the speed, length and size quickly.

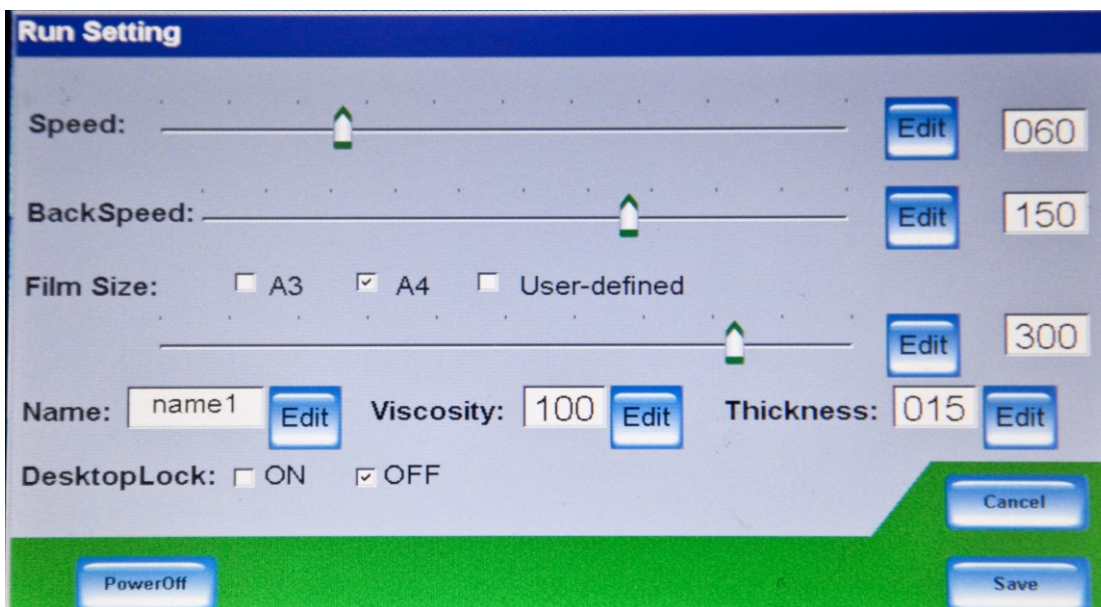
1.1 Speed is adjustable

1.2 Coating Size, A3:350mm,A4:250mm, User-defined is available. Slide  button to adjust the coating length.

2) The coating and thickness can be recorded, click the edit and amend the record.

3) Coating Name, click edit to change and choose the different coating, amend the coating name(Maximum 6 coating can be recorded).

4) The speed can not be adjusted on the screen when open the desktop lock.



##### 4.4.2 System Setting

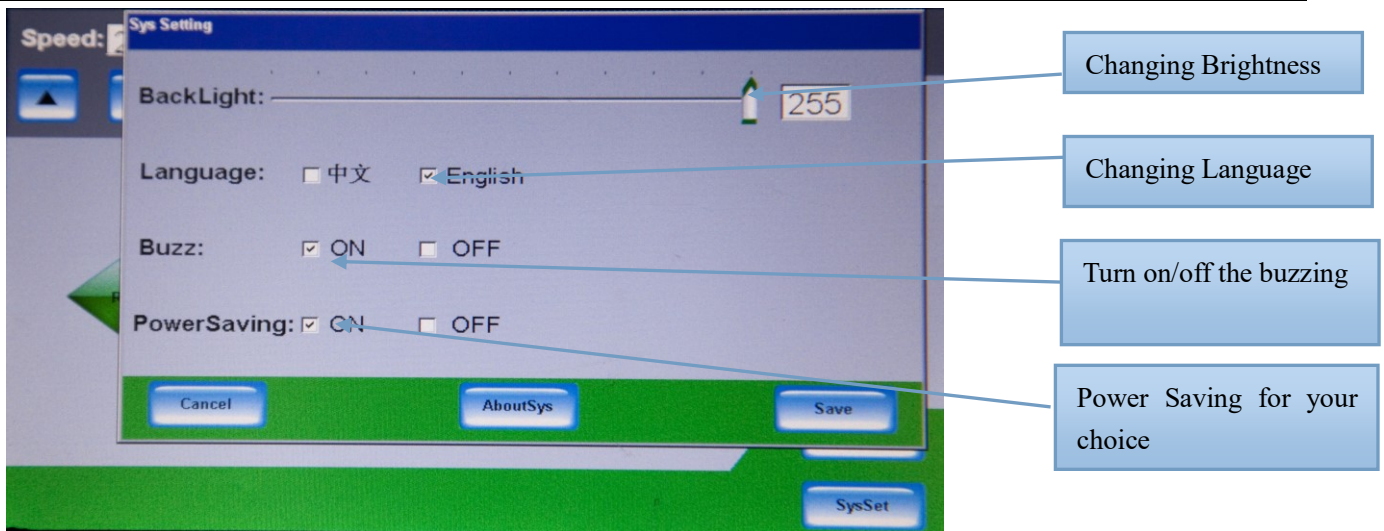
1) Changing the screen brightness

2) Changing the language

3) Turn on or off the buzzing

4) When you choose the power saving mode, the screen brightness will be off if the screen is not touched for a long time.





4.4.3 Every setting will be valid only after saving.

## 5 Maintain

1. Turn off the power before maintenance
2. Clean the testing platform after the testing
3. Checking the tightness degree of belt per month and do some adjustment properly.
4. Take apart the main machine once a year. Incline the bottom, remove the chassis, and loose the screws in each corner. Wash the rod and oil with the Lithium Grease. Put the bottom back to the original position and place it on the horizontal plan.

## 6 Attention

- 6.1. Make sure that the machine is being used in the environment of dry and no-corrosiveness
- 6.2. Place the machine in the solid working platform
- 6.3. Reliable ground lead is necessary in power outlet
- 6.4. Working Environment: Using the machine in the inside room and the temperature is between 15°C~35°C
- 6.5. The A-weighted emission sound pressure level at workstations does not exceed 70 dB(A).

---

## 7 Packing List

1.Main Machine 1 Unit

2.Power Lead 1 Unit

3.User Manual

4.Conformity of Certificate