

产品介绍/Introduction

采用金属化聚丙烯薄膜进行无感式卷绕,特殊喷金工艺,迈拉胶带封装,阻燃环氧树脂灌封,镀锡铜线或软线引出。具有优秀的高频纹波吸收能力,高dv/dt,频率特性好,杂散电感小。产品广泛应用于逆变器、变频器各类逆变系统开关模块(IGBT)中作吸收保护、尖峰电压钳位等场合。

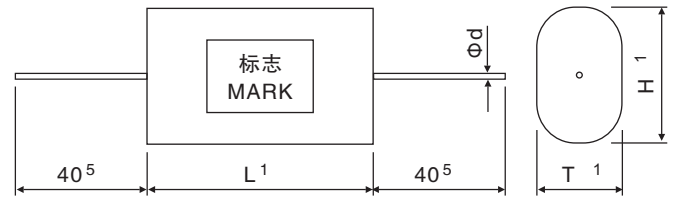
Non-inductive winding with metallized polypropylene film, special metal spray, Mylar tape encapsulation, flame retardant epoxy potting, tin plated copper wire, copper sheet or soft wire leads. Excellent high-frequency ripple absorption ability, high dv/dt, good frequency characteristic, low stray inductance. Widely used in inverter system for switch module (IGBT) protection, peak voltage clamp, etc.



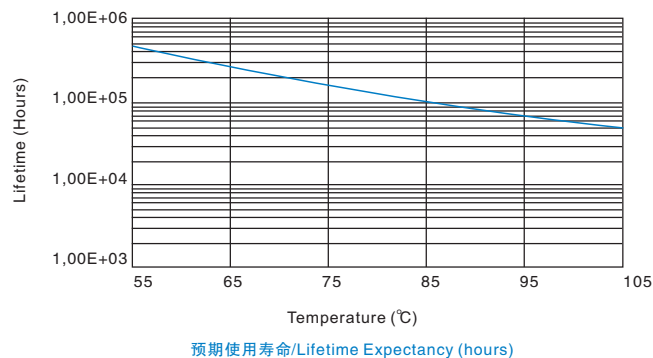
性能指标/Technical data

引用标准 Reference	GB/T17702, IEC61071
容量范围 Capacitance	0.01~6.8 μF
容量偏差 Capacitance Tol.	5% (J), 10%(K)
电压范围 Voltage	630V.DC~3000V.DC
极间耐压 U _{T-T}	1.5~1.75Un/60s
浪涌电压 Surge Voltage	2Un (t < 100ms)
损耗角正切 tg δ	tg δ ≤ 0.0008 (10kHz 20°C)
绝缘电阻 RiXCn	Cn ≤ 0.33 μF ≥ 15000MΩ Cn > 0.33 μF ≥ 10000s
耐电冲击能力 dv/dt	> 200V/μs
气候类别 Climatic Category	40/85/21 or 40/105/21
工作温度范围 Operating Temp.	-40°C~85°C/105°C
储存温度范围 Storage Temp.	-40°C~85°C
引出方式 Lead Methods	插针、软线
预期寿命 Lifetime Expectancy	100000h (θ h.s=85°C)
封装形式 Encapsulation	迈拉胶带, 白色环氧

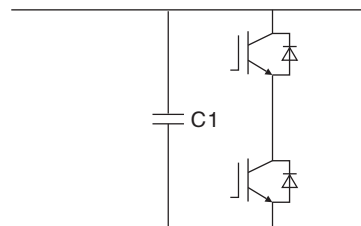
外型及尺寸/Outline drawing



预期使用寿命/Lifetime expectancy for MKPH-SB



典型线路图/Typical circuit



技术参数/Technical parameters

Un=1000V.DC

Cn(μF)	Part number	L(mm)	T(mm)	H(mm)	Φd(mm)	ESR(mΩ)	ESL(nH)	dv/dt(V/μs)	Ipk(A)	Irms(A)	Wt(g)
0.068	68301000311--	27	10	21	0.8	11.2	18	1100	74.8	3.8	4
0.1	10401000311--	32	8	15	0.8	10.0	20	1100	110	5.5	5
0.22	22401000311--	32	12	20	1.0	7.3	21	1000	220	7.3	10
0.33	33401000311--	32	15.5	26	1.0	6.2	21	1000	330	8.7	13
0.47	47401000311--	32	18	27.5	1	5.1	23	1000	470	10.5	21