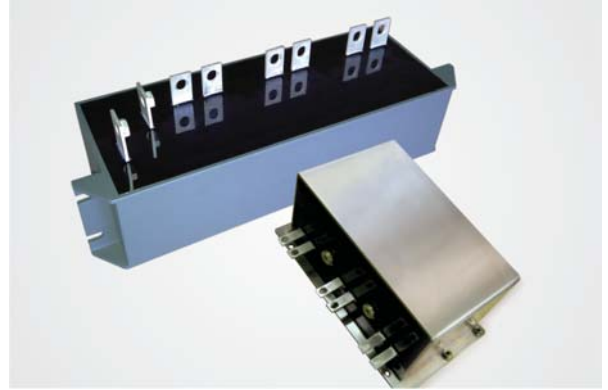


产品介绍/Introduction

采用金属化聚丙烯薄膜进行无感式卷绕，特殊喷金工艺，工程塑料、铝或不锈钢外壳封装，阻燃导热环氧树脂灌封，铜插片或铜螺母引出。具有高容量，大电流，低温升，杂散电感小等优点，主要应用于电动汽车及混合动力汽车作直流滤波及支撑。 Non-inductive winding with metallized polypropylene film, special metal spray, plastics, aluminum or stainless steel shell encapsulation, flame retardant and thermal conductivity epoxy potting, copper sheet or copper nut terminal. big capacitance, large current, low temperature rise, low stray inductance, mainly used in electric cars and hybrid vehicles for dc-link.

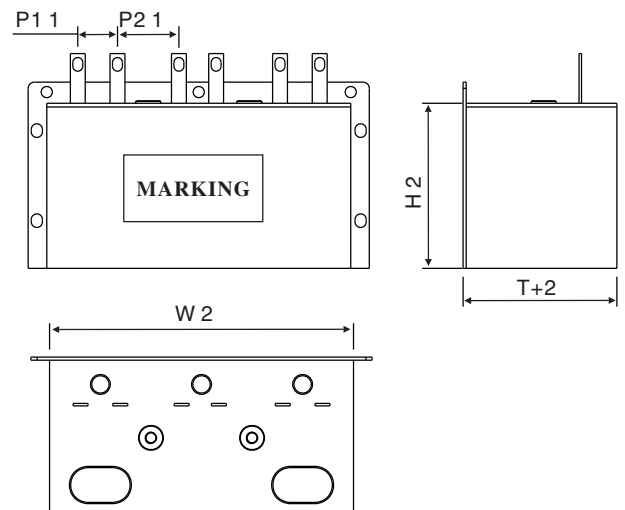


性能指标/Technical data

引用标准 Reference	GB/T17702, IEC61071
容量范围 Capacitance	200~2000 μ F
容量偏差 Capacitance Tol.	10%(K)
电压范围 Voltage	400V.DC~800V.DC
极间耐压 U_{T-T}	1.5Un/10s
过电压 Over Voltage	1.1Un (30% of on-load-dur.)
	1.15Un (30min/day)
	1.2Un (5min/day)
	1.3Un (1min/day)
介质损耗角 $tg \delta_o$	$tg \delta_o \leq 0.0002$
绝缘电阻 $RiXCn$	$\geq 5000s (20^\circ C \ 5^\circ C \ 100V.DC \ 60s)$
耐电流冲击能力 dv/dt	$> 50V/\mu s$
气候类别 Climatic Category	40/105/56
工作温度范围 Operating Temp.	$-40^\circ C \sim 105^\circ C (\theta h.s \leq 105^\circ C)$
储存温度范围 Storage Temp.	$-40^\circ C \sim 85^\circ C$
最大电极扭矩 Torque of terminals	M6:3.5N.m M8:6N.m
使用海拔 Max.Altitude	$< 2000m$
预期寿命 Lifetime Expectancy	50000h ($\theta h.s=70^\circ C$)
封装形式 Encapsulation	不锈钢外壳，黑色环氧

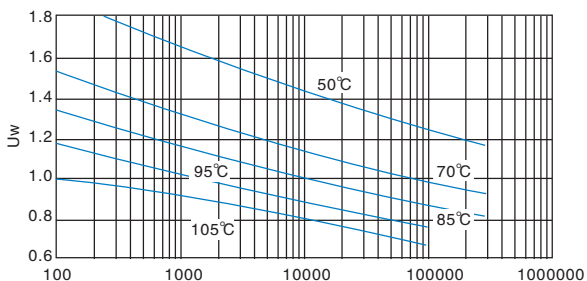
注：海拔使用高度超过2000m，应该考虑海拔对冷却和绝缘的影响。

外型及尺寸/Outline drawing



Outline drawing A...

预期使用寿命/Lifetime expectancy for MKP-LB



预期使用寿命/Lifetime Expectancy (hours)

工作电压/ U_w : permanent working or operating DC-voltage

典型线路图/Typical circuit

