

### 产品介绍/Introduction

金属化聚丙烯薄膜卷绕而成，无感结构，阻燃塑料外壳封装。具有稳定性好、损耗小、自愈性好、频率特性好的特点，主要用于电磁炉电源整流后平滑滤波，起直流支撑作用。

The products are made of metallized polypropylene film, non-inductive construction, encapsulated in a plastic sealed with epoxy resin.

- High stability
- Low dissipation factor
- Excellent Self-healing property
- Good frequency characteristics

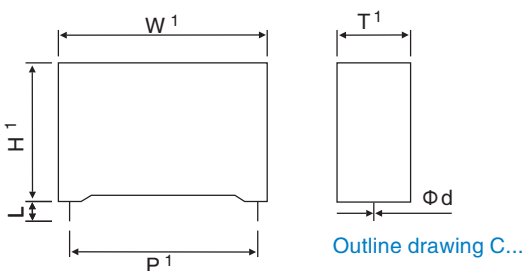
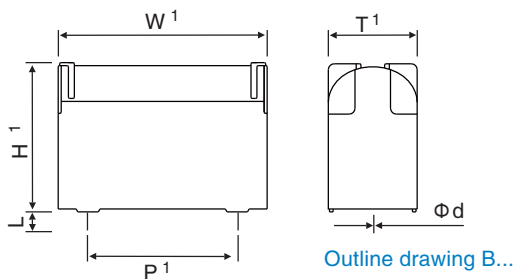
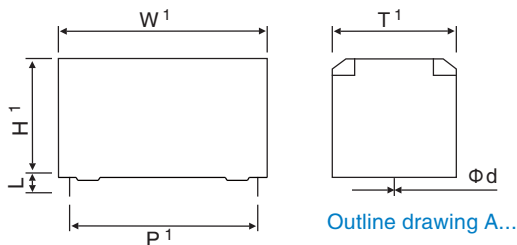
Used in induction cooker power for DC filtering and DC-Link.



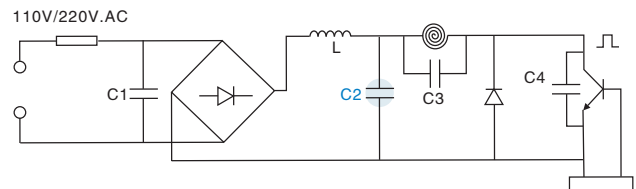
### 性能指标/Technical data

使用温度 Climatic Category	40/105/21
容量范围 Capacitance range	3.3 ~ 10 $\mu$ F
额定电压 Rated voltage	400 V.DC
容量偏差 Capacitance tolerance	5 %
损耗角 Dissipation factor	$\leq 0.001$ (at 1kHz)
绝缘电阻 Insulation resistance	$C \times R_s \geq 5000S$
脉冲能力 Withstand current ability	$dv/dt > 30V/\mu s$
阻燃性 Flammability	UL94V-0
耐电压 Rated voltage	700VDC/10S
引用标准 Referenced standard	GB/T 17702 IEC 61071

### 外型及尺寸/Outline drawing



### 典型线路图/Typical circuit



### 技术参数/Technical parameters

#### Outline drawing A...

Cn ( $\mu$ F)	Un(V.DC)	W(mm)	T(mm)	H(mm)	P(mm)
4	400	35.5	23	15.2	31
4	400	30	19.2	14.2	26.5
5	400	30	21.7	16.2	26.5
5	400	35.5	24	17.5	31
5	400	35	26.5	17	31
6	400	37	26	21	31
6.8	400	37	31	23	31
10	400	35.5	32	24.5	31

#### Outline drawing B...

Cn ( $\mu$ F)	Un(V.DC)	W(mm)	T(mm)	H(mm)	P(mm)
4	400	30	13.2	21.5	26.5
4	400	35	14.5	23.5	31
4.7	400	35	16	26	31
5	400	35	16	26	31

#### Outline drawing C...

Cn ( $\mu$ F)	Un(V.DC)	W(mm)	T(mm)	H(mm)	P(mm)
3.3	400	36	13.5	24	31
6	400	37	19	30	31
6.8	400	37	19	30	31

P=26.5为第四代小体积产品

L	4.1	10	16	Φd	0.8	1.0	-
---	-----	----	----	----	-----	-----	---

注：以上参数仅供参考，以实际图纸为准。

Note: the above parameters for reference only, see the drawing for details.