



## NET FORMELHYDE INTERIOR WALL PAINT

This product is used of high-quality imported raw materials, special additives and advanced production technology. Apply to hotels, guesthouses, villas and other decorative works

### TECHNICAL DATA

---

<b>Product Name:</b>	NET FORMELHYDE INTERIOR WALL PAINT
<b>Product Code:</b>	S9130
<b>Type:</b>	Water-based emulsion paint
<b>Appreance:</b>	White paste
<b>Main Components:</b>	Styrene-acrylic emulsion+CaCO <sub>3</sub> +TiO <sub>2</sub>
<b>Color:</b>	White
<b>Finish:</b>	Sheen
<b>Volume:</b>	20 KG/bucket
<b>Brushing Area:</b>	6m <sup>2</sup> /kg (2 coats, film thickness of single coating-30μm)
<b>Abrasion Resistance:</b>	>300 times
<b>Product Standard:</b>	GB 18582-2008; GB/T9756-2009
<b>Shelf Life:</b>	18 months
<b>Surface Drying Time:</b>	0.5 hours
<b>Interval Time:</b>	2 hours (Film thickness 30μm, 25-30°C)
<b>(for second coat)</b>	
<b>Drying Time:</b>	1 hours
<b>Curing Time:</b>	7 days
<b>Stability of Diluted Paint:</b>	48 hours
<b>Dilution:</b>	S9130: Water=1:0.2

---

#### Application:

Interior decoration and protection of villas, hotels, hospitals, office buildings and house.

---

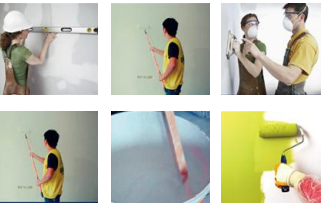
#### Advantages:

- ◆ No odors
  - ◆ Anti-mildew and anti-bacterial
  - ◆ Excellent alkali resistance
  - ◆ Abrasion resistance
  - ◆ Fine film
-

**Application Conditions/ Limitations:**

Surface preparation:	◆ For repainting: Clean the surface till it is free from dust, grease and flaking paint from surface.Any unstable paint to be removed , using high pressure wash or scraper whichever is appropriate. ◆ New plaster: Ensure surface is completely cured and dry.Application of cement paint/lime as undercoat is not recommended.
Construction Temperature:	5°C~45°C.
Construction Humidity:	≤85%
Dew Point:	◆ Beware of condensation! ◆ Substrate temperature during application must be at least 5°C above dew point.
Storage condition	18 months from date of production if stored properly in original unopened, sealed and undamaged packaging in cool and dry conditions at temperatures between +5°C and +25°C. Protect from direct sunlight.

**Application Instructions:**



1. Apply the putty ( 3 coats is appropriate).
2. Polish the surface.
3. Clean the dust.
4. Take out the appropriate product, dilute 20% water and stir evenly.
5. Brush the second time after 2 hours drying of the first time brushing.

**Safety health & Envirnmental information**

During painting	Always work in a well ventilated area. Wear appropriate attire, especially gloves and eye protection gear. Avoid contact with skin as it may cause irritation.
Cleaning	Wash all the tools with water immediately after application
Safety instructions	In case of eye contact, rinse immediately with water and seek immediate medical treatment. To remove paint for skin, use soap and water or appropriate cleanser. In the event of spillage, contain and collect spilt paint by using sand or earth.
Environment:	Does not contain any added lead, mercury or chromium compunds.

**GUANGDONG SHILIDE BUILDING MATERIAL CO. LTD.**

#27-33, Floor 3rd , Block 6, Meiju Building Materials City, Lvjing West Road, Foshan, Guangdong, China  
Ph: +86 0757 82726219 Email: exp@shilide.com.cn Website: www.shilide.com.cn