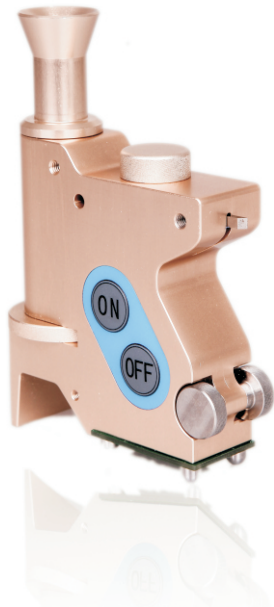


Thickness

Paint Inspection Gauge(PIG)

■ Introduction :

BEVS1707 PIG is using destructive method to measure coating thickness, containing single and multiple coats, applied on all of substrates, e. g. : aluminum, iron, plastic, wood, concrete, glass etc.



■ Using Principle :

A cut is made on the test surface with a V-shaped tool. The coating thickness can be measured with the built-in microscope under the LED light.

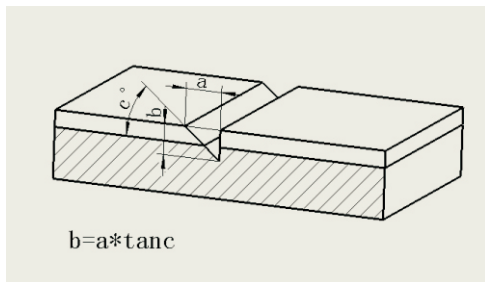
■ Standard :

ASTM D4138, DIN 50986, ISO 2808





■ Technical Specification :

Cutter	Cut Angle	Range(μ m)	D Factor(μ m)
No.1	45°	20-1800	20
No.2	63. 4°	10-900	10
No.3	84. 3°	2-180	2

■ Measurement Principle:



■ Operating Steps:

Step	Illustration	Description
1		Prepare the inspecting area.
2		Draw a line with the marker pen on the surface.
3		Cut the coating vertically and make sure it is lacerated.
4		Read the graduation-scale with the microscope to attain thickness.



■ Order Information:

BEVS 1707 Paint Inspection Gauge
 Including 1 pc of No.1 Cutter, battery, marker pen
 and carrying case

■ Order Information of Accessories:

BEVS 1707 PIG/1 Cutter No.1
 BEVS 1707 PIG/2 Cutter No.2
 BEVS 1707 PIG/3 Cutter No.3